



UNIVERSITY OF LEEDS

# EXPLORE LANGUAGES 2024-25

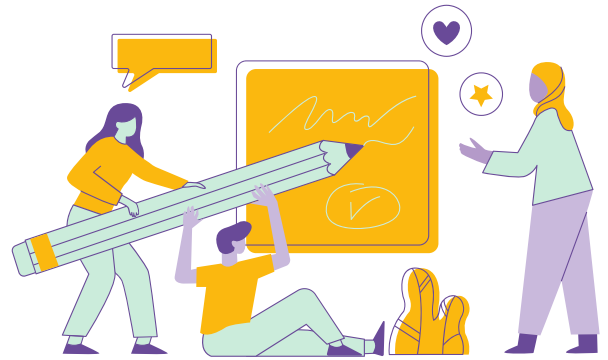
## TEACHER BOOKLET

Ignite your students' passion for languages.



# Overview

Explore Languages is designed to ignite your students' passion for languages and is all about showcasing the amazing benefits of studying a language at GCSE and beyond.



## Students will...

### Develop research skills

Students will have the chance to practice and enhance their research skills whilst making a creative and fact-filled poster. They will join us on campus for a poster showcase and languages taster day.

### Hear from our language students

Listen to our current language undergraduate students talk about why they chose to study a language, what the benefits are and what career options it opens up.

### Practice speaking skills

Our current students will host some 'Conversation Games' where your students will be able to practice their speaking skills in their chosen language.

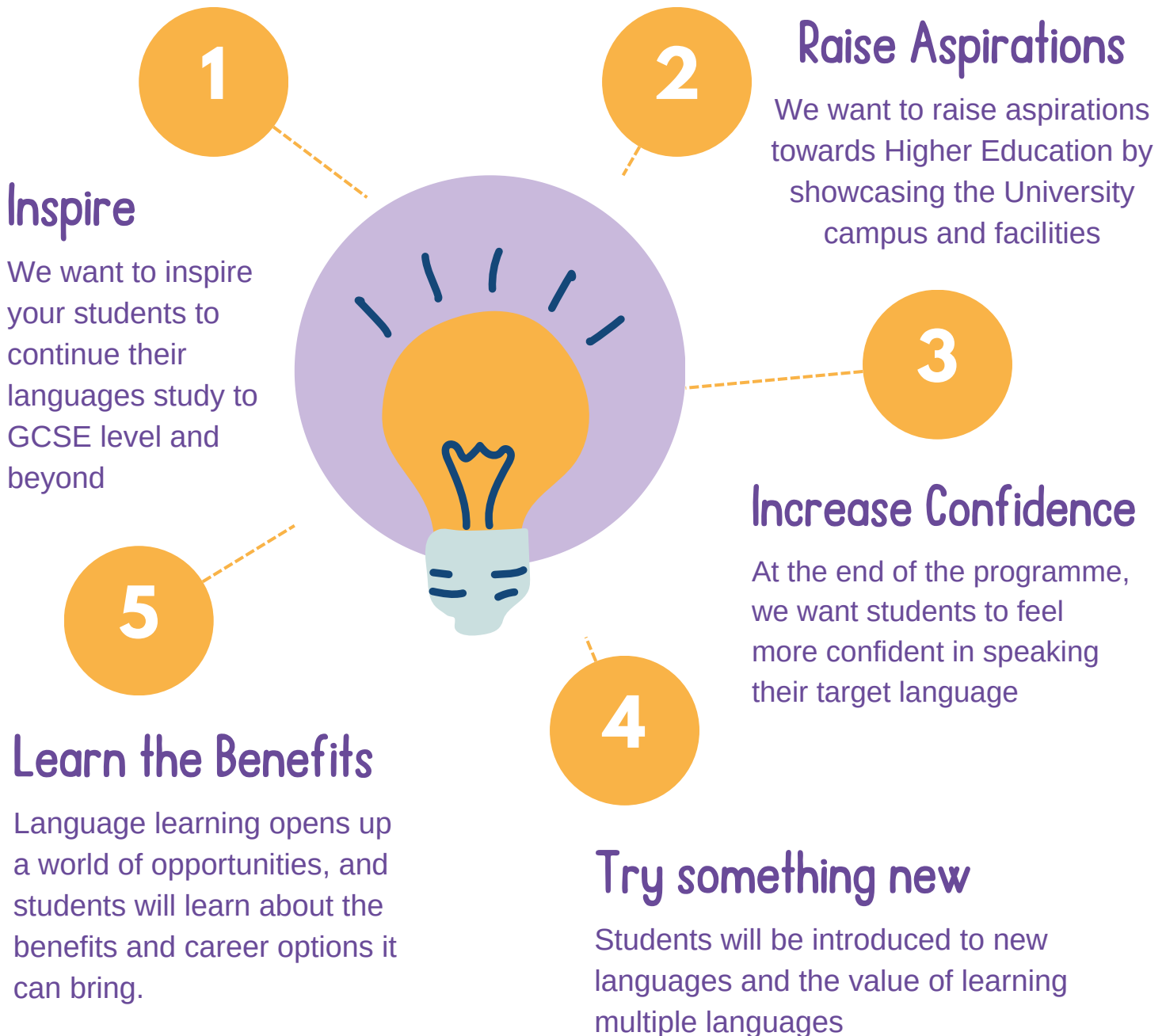
### Try a new language

Students will be able to learn a language that they've never studied before. Last year we had tasters in Russian, Korean, and Italian.



# Our Aims

Explore Languages hopes to support schools who have seen a recent decline in the take-up of languages at GCSE. We hope to tackle this issue directly with a series of activities delivered in school and on campus here at the University of Leeds!



## Gatsby Benchmarks

This activity is designed to support schools to work towards the Gatsby 'Good Career Guidance' Benchmarks. Participants will learn from career and labour market information (benchmark 2) and carry out encounters with further and higher education (benchmark 7) and the activity links curriculum learning to careers (benchmark 4).

# What's Involved?

During the project, the group of students that you have selected will be expected to participate in a number of activities, including workshops delivered by students from the University of Leeds.



## Explore Languages Activities

### In-School Workshop

Our Student Ambassadors will visit your school to launch the programme with an explanation of the upcoming activities and the taster day.

They will tell your students all about their languages journey in an interactive session that gets your students thinking about the benefits of language learning. Students will be introduced to Higher Education and how languages link to the other subjects they love!

DEC

### Poster Development Task

We'll send you a recorded video, which will launch the self-directed poster task. In groups of 5, students will work together to research and create A1 posters on their chosen language. They will work on their posters throughout January, which they will then showcase (in English) at the campus day in February.

JAN

### University Taster Day

You will bring your group of students to the University of Leeds to explore our campus and facilities. Students will take part in a beginners language workshop, some conversation games to support their target language skills and showcase their posters in front of academics and current students!

FEB

5th February  
French Taster Day

12th February  
Spanish Taster Day

26th February  
German Taster Day

# Poster Task



## What to include on the posters

- Examples of successful people who have studied that language
- Benefits of learning that language
- Potential career options available



## Which language?

- Groups can choose to research their KS3 language, a language they can study at GCSE, or another language taught by the University of Leeds
- Posters should be written in English with use of some words/phrases in their chosen language

## When do groups work on posters?

- The research and creation of the poster will need to be done during lessons or set as homework. Students can complete it during lunch times or after school - it's up to you!
- Remember that the posters need to be completed by the campus taster day to be displayed.





# How do I select students to take part?

As this is a widening participation programme, we would like to work with students from groups who are underrepresented at university. If your school is offered a place, we will ask you to select 25-30 who are eligible for Pupil Premium.

This programme is open to Year 8 or 9 students before they have made their GCSE choices. If your students make their decisions in Year 8, please select students from this year group to take part.

**Pupil  
Premium  
students**



**25-30  
students  
per school**



**Year 8 or 9**



It's up to you as to who you think would benefit the most from the sessions and experience. You might want to include:

*Those who cannot see  
the benefit in studying  
a language*

**Those who are unsure  
about whether they  
want to continue with a  
language at GCSE**

**Those who would like  
to find out more about  
new languages**

*A mixture of all  
these*

**All the students you select must be studying the same language (French, Spanish or German) so that they can attend our relevant Taster Day.**

# The Campus Taster Day

## February 2025



You and your students will join us for one of three campus events where students will take part in interactive language activities, spend time with current University of Leeds students and get to experience our vibrant campus. Lunch will be provided.

In the morning, groups will display their posters in a similar way to a university poster conference. Everyone's posters will be showcased at the same time, and academics and current students from the university will make their way around the room and ask the students questions about their posters.

Sessions for the campus day are to be confirmed, but please see the below example schedule:

9:15	<b>Arrival and Registration</b>
9:30	<b>Welcome</b>
9:45	<b>Poster Showcase</b>
10:35	<b>Conversation Games</b>
11:30	<b>Language Zone Treasure Hunt</b>
12:20	<b>Lunch</b>
13:10	<b>Beginners Language Taster Session</b>
14:00	<b>Campus Tour</b>
14:45	<b>Student Ambassador Q+A</b>
15:10	<b>Reflections, Thank you + Evaluations</b>
15.30	<b>Finish</b>



# Judging Criteria

The judging panel will be using specific criteria to assess which team has produced the best poster.



## How will the posters be judged?

### Good research

You should demonstrate you have researched your target language, including the benefits of studying, related careers and a case study on someone who has studied that language.

### Show your understanding

Make sure you really understand the points you are trying to make. Judges will be asking questions about your posters too!

### Use of chosen language

Don't forget to include some words or phrases in your chosen language (and include an English translation!)

### Creativity

Show us your creative skills in your posters. We want them to be visually interesting and easy to read.



As well as your case study, you must use at least one other method to research your chosen language. This could be:

- Internet searches
- Books/online books
- Journals
- Interviews



# School Commitment

Before you enter Explore Languages, please make sure you are available to take part in all aspects of the programme. This includes the in-school workshop and the on-campus taster day.

## What is required from your school?



To participate in this event, **you must be available to take part in all aspects of the competition**, including the on-campus event at the university.



This is a **free event** and schools will only have to pay for **transport to the University** and possibly any materials the students want to use for their posters.



You should allow one hour for the first in school workshop. You will then need to organise time for groups to complete their posters ready for the showcase at the Campus Event. This could be done during lessons, lunchtime or as homework.



You must be able to attend the taster day and on campus showcase on the relevant date.

## How do we choose the schools?

As this is a widening participation programme, we use the following criteria to select the schools we think would benefit the most from this project.

### We are looking for:

- State schools
- Schools within 2 hours from the University of Leeds on public transport
- Up to 30 students from Year 8 or 9 who are eligible for Pupil Premium

### How we prioritise schools:

- School's language take-up at GCSE
- School's percentage of Free School Meals
- Languages taught at the school and availability to attend the on-campus taster day

# Application Information

Applications open on Monday 17th June and close on Thursday 3rd October 2024



Apply via our  
online form



If you have any questions, please contact us at [artsoutreach@leeds.ac.uk](mailto:artsoutreach@leeds.ac.uk)

## Evaluation

Due new guidelines set by the Office for Students, the Arts & Humanities Outreach Team at the University of Leeds now need to place **greater emphasis on the evaluation of our activities**.

We would therefore be very grateful if you and your students could complete **a pre-event questionnaire before the first workshop and a post-event questionnaire on the campus day**.

We would also like to, where students and parents agree, **track your students through the Higher Education Access Tracker** to find out whether your students go onto university or college, where they go and whether they get a job afterwards. Your students and their parents will need to complete a form to consent to this. This is not a requirement of taking part in the activity but we would be grateful if you could ask your students to take part and complete the necessary paperwork.